

COMPANY PROFILE

Connecting to the future

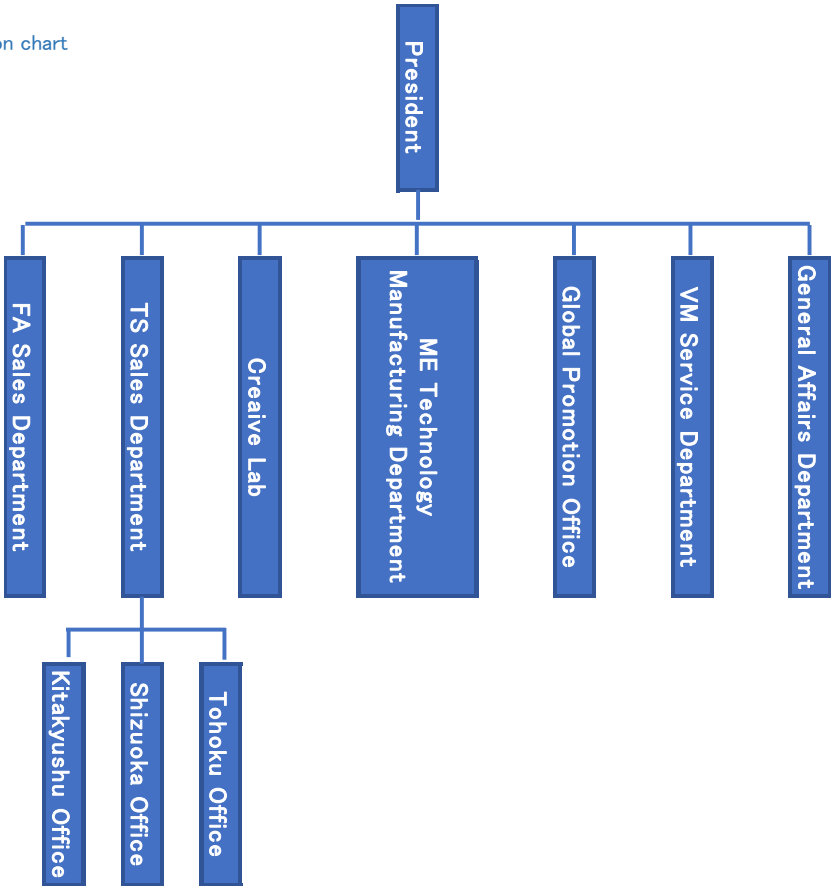
-BEST SUPPORTER-



■ Company Profile

company name	SANKI CO., LTD.			
URL	https://www.sanki1948.co.jp/en/			
Established	March 1948			
Capital	99 million yen			
Shareholder	Sanki Holdings Co., Ltd. (100%)			
Board Members	Chairman	Yoshinori Kijima	Auditor	Makiko Kijima
	President	Masato Kijima	Auditor	Chikako Kijima
	Director	Naoki Nishio	Excutive Officer	Masahito Sakakibara
	Director	Kazunari Nishimoto	Excutive Officer	Masanori Hamada
	Director	Katsuhiko Yoshida		
Employees	132(as of July 2025)			
Location	〒456-0035 2-8-24 Shirotori, Atsuta-ku, Nagoya-shi, Aichi TEL +81-52-681-2131			
Business Contents	◆ Factory Automation Equipment Sales (standard)			
	Machine tools / tools (cutting / grinding / measurement) / gauges			
	Robot Products / Planning			
	◆ Factory Automation Equipment Sales (special)			
	For automotive and aerospace industries (jigs, molds, precision parts, gauges)			
Banks	◆ Manufacturing			
	Inspection equipment for FA, dedicated machine, factory IOT conversion, OEM production			
	Research and development support (various test equipment development, PCB production, mockup)			
	◆ Vending machine			
	Installation, management and sales of vending machines			
Banks	◆ Web sales			
	Web sales (National skill test and other parts, sensors and other industrial parts sales)			
	MUFG Bank,Ltd. Uchidabashi Branch The Juroku Bank, Ltd. Atsuta Branch Sumitomo Mitsui Banking Corporation Nagoya Branch			

Organization chart



■ Our History

March 1948	Machine tool dealer SANKI COMANY (24 Minaminegicho, Nakamura-ku, Nagoya-shi) was founded
October 1950	Reorganized to unlimited company SANKI COMPANY (moved to 1-9 Kakomachi, Nakamura-ku, Nagoya-shi in July 1957)
1955	Started design and manufacturing of jigs, parts for jig and tools
1960	Started design and manufacturing of specialized machines and equipment
April 1961	Founded SANKI TRADING CO., LTD (Capital of 3 million yen)
October 1962	Started vending machine business
April 1964	Started metallic machine tool business, increased the capital to 10 million yen
April 1965	Established Sanki Iron Works Co., Ltd. (November 1979 renamed Sanki Machine Co., Ltd.)
March 1966	Completed the first phase of constructing head office building, moved to the current location
May 1966	Opened Hamamatsu Office (opened at 420 Magomemachi, Hamamatsu-shi, later moved to 1511 Terawakicho, Hamamatsu-shi, then further moved to the current location, renamed Hamamatsu Sales Office)
May 1968	Increased the capital to 20 million yen
November 1968	Completed the second phase of the head office building construction
May 1969	Increased the capital to 30 million yen
May 1971	Increased the capital to 45 million yen
May 1978	Increased the capital to 54 million yen
May 1979	Increased the capital to 62.1 million yen
March 1981	Increased the capital to 80 million yen having the capital participation of Nagoya Small and Medium Business Investment Consultation Co., Ltd; Newly established Electronics division
March 1982	Newly established electronics factory
December 1982	Honored by the governor of Aichi Prefecture as an excellent company in the aspect of unemployment insurance
May 1985	Increased the capital to 90 million yen
December 1988	Established SANKI FINANCE LTD.
September 1991	Increased the capital to 99 million yen
August 1995	Completed exterior work of the whole head office building
January 1998	Established SANKI NORTH AMERICA, INC.(SNA)
July 2001	Established representative office in Seoul
April 2002	Mechatronics division ISO9001: 2000 Registration screening
August 2003	Completed new mechatronics building (name changed to Annex Building in March 2019)
June 2004	ISO9001: 2000 Registration expansion (headquarters) Full renovation of the headquarters
November 2004	Honored by the City of Nagoya as Meritorious Company for tax payment
July 2005	ISO14001:2004 acquired by Headquarters and Mechatronics
September 2005	Established SANKI EUROPE KERESKEDELMI KFT.(SEU)
July 2006	Promoted the representative office in Seoul to Korean Branch Office
March 2008	Registration for screening of quality management system(JISQ9100:2004/JISQ9001:2000) for procurement and sale of jigs and jig parts in the aerospace industry
October 2008	Established Kitakyushu Sales Office
December 2008	Started the manufacture EC shop "MONOZO"
October 2010	Established Guangzhou Sanyunji Trading Co., Ltd as a business location in China
January 2014	Established PT. Sanki Mechatro Indonesia as a business location in Indonesia
February 2015	Management integration with the Corporation Sanki machine was renamed the company name with the Sanki co., Ltd.
January 2016	Established PT.Sanki Machine Indonesia as a manufacturing location in Indonesia
January 2017	Sanki Headquarters (ISO9001: 2008 / IOS Q 9001: 2008) Submit registration decline notification
February 2019	New head office building completed
August 2019	Established Kosai Office, in 2021 Changed name to Shizuoka Office
November 2019	Hamamatsu Office closed
March 2020	Established Sanki Holdings Co., Ltd.
October 2021	Established Tohoku Office
April 2022	Changed the name of Kosai Office to Shizuoka Sales Office
June 2022	Reduced investment in SANKI EUROPE KERESKEDELMI KFT. to 10% and changed the company name to SF Tech Europe LTD.
January 2024	Established Sanki M&T Mexico S.A. de C.V.
March 2025	Sanki Finance LLC is dissolved. Its functions and obligations are inherited by Sanki Holdings Co., Ltd.
April 2025	Liquidation of Guangzhou Sanunki Co., Ltd.

Domestic branches

Headquarters

Sanki co., Ltd. Headquarters

〒456-0035

2-8-24 Shirotori, Atsuta-ku, Nagoya-shi, Aichi

TEL: +81-52-681-2131

FAX: +81-52-681-2004



Annex Building

〒456-0035

1-4-1 Shirotori, Atsuta-ku, Nagoya-shi, Aichi

TEL: +81-52-681-2133

FAX: +81-52-681-2147



Gifu Plant

〒504-0957

18 Kinzokudanchi, Kakamigahara-shi, Gifu

TEL: +81-58-389-3181

FAX: +81-58-389-3197



Kitakyushu office

〒806-0023

1-14-6 Takanosu, Yawatanishi-ku,
Kitakyushu-shi, Fukuoka



Shizuoka office

〒431-0424

Youth Bldg. 1F, 3-5-2 Shinjohara, Kosai-shi,
Shizuoka



Tohoku office

〒963-8025

Live Bldg. 101, 2-18-15 Kuwano, Koriyama-shi,
Hukushima



■ overseas branches

North America: SNA

■ Trade name	SANKI NORTH AMERICA INC.
■ Established	January 1998 【Headquarters in Tennessee】 1739 Triangle Park Drive Maryville, TN. 37801
■ address	【Michigan office】 4950 W. Dickman Road, Suite B-1 Battle Creek, Michigan 49037 【México office】 Degollado sur #1800, Office A6. Obispado Monterrey, N.L.México C.P. 64040
■ Capital	\$150,000
■ Director	President: Masato Kijima
■ Number of employees	8 employees (3 Japanese staff members)
■ Main import origins	DENSO Manufacturing Michigan, Inc.(DMMI) DENSO Manufacturing Tennessee, Inc.(DMTN) DENSO Manufacturing Athens Tennessee, Inc.(DMAT) Michgan Automotive Compressor, Inc.(MACI)



テネシー事務所



ミシガン事務所

1. History from establishment to present

Initially established in 1998, we opened the Michigan office with one representative from Japan and one local employee, starting with parts supply services from Japan. In 2000, we opened a Tennessee office to build a system that can meet the needs of new and a wider range of customers in North America. By establishing offices in South Korea, China, Hungary and Indonesia, we have created a global supply system and provide services that fulfill our customers.

2. Connection with SANKI JAPAN

“SANKI JAPAN” supports “SANKI NORTH AMERICA” with the outstanding technology and experience cultivated in Japan. In order to respond to customer opinions and requests, information is constantly exchanged and reflected in the work.

Going forward, we will continue to work with the Global Promotion Office launched in 2017 to supply products that satisfy our customers.

3. Future development

In addition to supplying equipment and mold parts, we also offer technical support for engineering tasks as a further contribution to “manufacturing”. In order to develop the technology acquired as Sanki Group in North America, we will utilize the network we have established so far and expand a new network (with the opening of our Mexican Office) to provide our customers with the best service.

Latin America: Monterrey, Mexico (SMX)

■ Trade name	Sanki M&T Mexico S.A. de C.V.
■ Established	October 23, 2023 (opening date January 1, 2024)
■ Address	Jose Treviño # 190 local 203 Chepevera Monterrey NL México
■ Capital	MX \$2,020,000
■ Director	President: Masato Kijima
■ Number of employees	4 employees
■ Main import origins	DENSO TEN DE MÉXICO, S.A. DE C.V.(DNMX) HAMADEN MEXICO S.A. DE C.V.(HDMX) TOKAI RIKI MEXICO, S.A. DE C.V.(TRMX)



1. History from establishment to present

In 2014, we started sales activities on a business trip basis. At first, we were just two people, one Mexican and one Japanese.

At the same time as our sales activities, we also promoted marketing within Mexico, and after looking at various information on where to open our office, we decided on Monterrey, Mexico's third largest city.

Being close to the US border, it is a modern city that has both American and Mexican cultures.

It is also a thriving industrial area, and with investment concentrated from all over the world, it is a very lively city.

2. Future development

Initially, the business focused on molds, but then they turned their attention to electrical design, which is in high demand worldwide, and teamed up with local manufacturers to meet customer demand.

Currently, the office consists of four Mexican employees, and they are steadily building up the trust of their customers, aiming for further growth.

■ overseas branches

Indonesia : CIKARANG(SMI)

■ Trade name	PT SANKI MECHATRO INDONESIA (SMI)
■ Established	November 8, 2013
■ Address	JL. SIMPRUG RAYA B2 NO.17 SERTAJAYA CIKARANG TIMUR – BEKASI 17530 INDONESIA
■ Capital	300,000 USD
■ Director	President: Rikishi Kajiura
■ Number of employees	2 employees (1 Japanese staff member)
■ Main import origins	PT DENSO INDONESIA (DNIA) PT DENSO MANUFACTURING INDONESIA (DMIA) PT HAMANAKO DENSO INDONESIA (HDI) PT TOYOTA DENSO AUTOMOTIVE COMPRESOR INDONESIA (TACI)



1. History from establishment to present

The business started with parts supply and precision parts sales under a three-person system (including one Japanese member). In 2015 PT SANKI MACHINE INDONESIA was established as factory division. We are gaining new clients by establishing a system that can meet a wide range of customer needs as engineering support with the coordination of production and sales.

2. Connection with SANKI JAPAN

SANKI JAPAN will be the parent company, supporting the improvement of PT SANKI MECHATRO INDONESIA's procurement capabilities, collaborating with global customers and responding to sales expansion of customers.

3. Future development

In order to enhance supply capabilities and engineering services that meet our customers' needs, we will expand our global network of customers and suppliers with the aim to create domestic and international collaboration.

Indonesia (Plant) : DELTA SILICON(SMCI)

■ Trade name	PT SANKI MACHINE INDONESIA (SMCI)
■ Established	November 2, 2015
■ Address	JAPANESE SME' S CENTER JL. KENARI RAYA BLOK G6-01 KAV. 7D KAWASAN INDUSTRI DELTA SILICON 6 JAYAMUKTI CIKARANG PUSAT – BEKASI 17530 INDONESIA
■ Capital	7,000,000,000 Rp
■ Director	President: Yoga Pratama
■ Number of employees	16 employees
■ Main import origins	PT DENSO INDONESIA (DNIA) PT DENSO MANUFACTURING INDONESIA (DMIA) PT HAMANAKO DENSO INDONESIA (HDI) PT TOYOTA DENSO AUTOMOTIVE COMPRESOR INDONESIA (TACI)



1. History from establishment to present

At the time of establishment in 2015, the three local members were trained for three years at the Sanki Gifu Plant. Initially, we started our business as engineering support. But since 2016 we have gained new customers, established an own dedicated machine manufacturer department in addition to the engineering support and have earned the trust of many clients.

2. Connection with SANKI JAPAN

SANKI JAPAN plays the role of a technology center as a parent company, supports the improvement of the technical capabilities of PT SANKI MACHINE INDONESIA, cooperates with global customers, and responds to customer sales expansion.

3. Future development

In order to enhance supply capabilities and engineering services that meet our customers' needs, we will expand our global network of customers and suppliers with the aim to create domestic and international collaboration.

■ overseas branches

Hungary

■ Trade name	SF Tech Europe LTD
■ Established	May 17, 2005
■ Address	Széna Tér 5., Székesfehérvár (city) 8000, Hungary
■ Capital	34,330 EUR
■ Director	President: Adam Tatar
■ Number of employees	4 employees
■ Main import origins	Denso Manufacturing Czech s.r.o. (Liberec – Czech Republic) Denso Manufacturing Hungary Ltd. (Székesfehérvár – Hungary) Denso Manufacturing UK Ltd. (Telford – United Kingdom) Bridgestone Tatabánya Kft. (Környe – Hungary)



1. History from establishment to present

When SEU was established in Hungary as European branch, the main business was to sell precision parts imported from Japan on the EU market including Hungary. In recent years, efforts have been made to connect with local manufacturers in Hungary, and 55% of the total demand can be produced in Hungary.

2. Connection with SANKI JAPAN

Taking advantage of the manufacturing and characteristics of each country of the Sanki Group (Japan, Korea, China), we are developing sales that satisfy customers.

3. Future development

We aim to conduct business with the best suggestions and proposals in mind to solve our customers' problems.

■ overseas branches

Korean branch

■	Trade name	SANKI KOREAN BRANCH
■	Established	July 1, 2001
■	Address	Songnae—daero 518beon—gil, Bucheon—si, Gyeonggi—do 14445, Korea
■	Director	Head of branch: Jae—hynk Heo
■	Number of employees	8 employees
■	Main import origins	SANKI NORTH AMERICA INC SANKI CO.,LTD. SEU(Sanki Europe) DENSO AUTOMOTIVE KOREA



1. History from establishment to present

Established as representative office in 2001 with one employee, we began with creating a network of suppliers in Korea. In 2007, the representative office was officially announced as Korean branch office. Currently, with handling exports to North America, Europe and Japan, we are in full charge of our role as international base of the Sanki Group.

2. Connection with SANKI JAPAN

With our manufacturing experience cultivated in Japan, we are aiming to be the hub of Sanki headquarters and the group by responding to all parts processing. In addition, we are trying to eradicate defects by introducing a Japanese inspector training curriculum that aims not only for production but also for a quality control system that is unbeatable.

3. Future development

We are working in the field of dedicated machines as well as molded parts and equipment units. We will provide customers with optimal service by expanding our international network.

■ Main customers

○ Domestic

Aisin Co., Ltd.
IHI Corporation
Kawasaki Heavy Industries, Ltd.
SUZUKI MOTOR CORPORATION
DENSO Corporation
DENSO electronics CO., LTD.
DENSO KYUSHU co., Ltd.
Tokai Rika Co., Ltd.
Toyota Motor Corporation
TOYOTA AUTO BODY CO.,LTD.
TOYOTA BOSHOKU CORPORATION
Toyota Central R&D Labs., Inc.
Mazda Ace Co., Ltd.
Mitsubishi Heavy Industries, Ltd.
Mitsubishi Electric Corporation
MURATA MACHINERY,LTD.

○ North America

AISHIN MANUFACTURING,INC.
AW NORTH CAROLINA,INC.
DENSO MANUFACTURING MICHIGAN,INC.
DENSO MANUFACTURING TENNESSEE,INC.
MICHIGAN AUTOMOTIVE COMPRESSOR,INC.
TOKAI RICA MANUFACTURING,INC.
MUSASHI INC
DENSO MEXICO S.A.DE C.V
HAMADEN MEXICO S.ADE C.V

○ Europe

DENSO MANUFACTURING CZECH s.r.o.
DENSO MANUFACTURING HUNGARY LTD.
TRCZ s.r.o.

○ Indonesia

PT. DENSO MANUFACTURING INDONESIA
PT. MUSASHI INDONESIA
PT. TOKAI RICA INDONESIA
PT. SUZUKI INDOMOBIL MOTOR
PT. HI-LEX INDONESIA

○ China

Denso (Guangzhou Nansha) Co., Ltd.
GUANGZHOU DENSO CO., LTD.
Foshan Tokairika Automotive Parts Co., Ltd.
AISIN SEIKI FOSHAN ELECTRONICS CO., LTD.

■ Our Business

Factory Automation Equipment Sales (standard)

● machine tools • tools

We provide tools such as machine tools, cutting tools and gauges that contribute to high accuracy and cost reduction.

When it comes to various machine tools and tools, you can leave it to our expertise.



List of machine tool manufacturers

Manufacturers	Products
Asahi Tech Corporation	Various plants, cleaning equipment, transport equipment
Utsunomiya Seisakusho Co.,LTD	CNC tool grinding machine
OET Co., Ltd.	High frequency induction heating device
OKK Corporation	Machining center, grinding center, general-purpose milling machine
Okuma Corporation	CNC lathes, compound processing machines, machining centers, portal machining centers, grinding machines
Okamoto Machine Tool Works Ltd.	Surface grinder, forming grinder, internal grinder, cylindrical grinder
Kawata Tech Co., Ltd.	5-axis machine compatible vise, large chuck, pallet changer
Camtus Corporation	CAD / CAM
Kondo Machine Works Co., Ltd.	Precision cylindrical grinder
JTEKT Corporation	Machining center, cylindrical grinder, ultra-precision machine
Sugiyama Mecha Retro Co., Ltd.	Machine tool overhaul and remodeling
Seibu Electric & Machinery Co., Ltd.	Machine tools (Nye / Electric EDM) / Conveying machines
Sodick Co.,Ltd	Electric discharge machine, electron beam, high-speed milling center, nano machining center
Takisawa Machine Tool Co., Ltd.	CNC lathes, compound processing machines, machining centers
Tactx Co., Ltd.	CAD / CAM
DMG MORI CO.,LTD.	CNC lathes, compound processing machines, machining centers
Techno Coat Co.,Ltd.	Laser welding machine / vibrating stress relief device
TOKYO SEIMITSU CO., LTD.	Precision measuring equipment
Trio Engineering Co., Ltd.	Machine tool overhaul and remodeling
Naito Machinery Co., Ltd.	Forging machines / rolling machines / overhauls
Nagase Integrex Co., Ltd.	Ultra-precision forming surface grinder, high-precision surface grinder, portal grinder, fine processing machine
Nano Factor Co., Ltd.	Tabletop precision grinding machine
Nissei, a joint-stock corporation	Rolling machine / rolling machine
Engis Japan Corporation	Wrapping and polishing equipment
Japan Automatic Machine Co., Ltd.	Servo press, hydraulic press, mechanical press, air press, precision vice
Japan Speed Shore Co., Ltd.	Lapping machine / machine tool coolant system
PCL Co.,Ltd.	Laser welding machine
Hyuga Manufacturing Co., Ltd.	Dryer, dryer, mold reversing machine, heavy object reversing device, etc.
FANUC CORPORATION	ROBODRILL, Wire EDM, Ultra-precision Nano Machining Machine
Brother Industries, Ltd.	Compact machining center
Plastron Co., Ltd.	Yepco surface treatment equipment
MAKINO SEIKI CO.,LTD.	CNC tool grinder, universal tool grinder, high precision vertical cylindrical grinder
Makino Milling Machine Co., Ltd.	Machining center, micro precision machine, electric discharge machine
Matsuzawaseiko Corporation.	Universal tool grinder
Maruei Machine Works Co., Ltd.	Cylindrical grinding machine
Miura Koki Co., Ltd.	Machine tool overhaul and remodeling
Mitsui High-Tec,Inc.	Super precision surface grinding machine
Mitutoyo Corporation	Precision measuring equipment
Mitsubishi Heavy Industries Machine Tool Co., Ltd.	Machining Center, Portal Machining Center, Small Precision Machining Machine, Cylindrical Grinding Machine
Mitsubishi Electric Corporation	Laser processing machine, electric discharge machine, electric discharge surface treatment,
YASDA PRECISION TOOLS K.K.	CNC jig borer / micro center
YAMAZAKI MAZAK CORPORATION	CNC lathes, compound processing machines, machining centers, and portal machining centers
Yamazaki Giken Co., Ltd.	General-purpose type milling machine, NC milling machine, machining center, horizontal type
Waida Mfg Co., Ltd.	Form grinder / Jig grinder / Tool grinder

List of cutting tool manufacturers

Manufacturers	Products
Asahi Diamond Industrial Co., Ltd.	Various diamond tools
Ishii Corporation	Diamond cutting tools, carbide cutting tools, high-speed cutting tools
Iwata Tool Co., Ltd	Carbide tools, high-speed tools, special tools
Utsunomiya Seisakusho Co., Ltd.	High-speed tools and carbide tools
OKC Co., Ltd.	Carbide tool re-grinding, special carbide tools (end mills, etc.)
Kato Seiko Co., Ltd.	Special carbide tools (end mills, etc.)
Saito Twist Drill. Co., Ltd.	High speed drill
Shinwa Seikou Co., Ltd.	Diamond cutting tools, carbide cutting tools, CBN tools
Sumitomo Electric Industries,Ltd	Cutting tools, turning tools, milling tools, end mills, drills
Big Daishowa Seiki Co., Ltd.	Tooling, cutting tools, measurement / measurement, peripheral equipment
New Sankyo Tool Co., Ltd.	Solid carbide end mill / high speed end mill
Ehwa Diamond Industrial Co., Ltd.	Diamond wheel / dresser rotor leadless / PCD & PCBN tool
Honda Tool Co., Ltd.	Cutting tools (carbide, diamond, CBN, high speed), cutting edge shape correction, regrinding
Mitsubishi Hitachi Tool Engineering,Ltd.	End mills / blade changeable tools / Lathe inserts / drills / threading tools
Mitsubishi Materials Corporation	Turning tools (cutting tools, inserts), rotating tools (end mills, milling cutters), drilling tools (drills)
Union Tool Co., Ltd.	Carbide end mill, PCB drill / router, small diameter drill, rolling die
RYOLOSEIKI.CO	Carbide drill, reamer, milling machine

List of measuring equipment manufacturers

Manufacturers	Products
Odiya Seiki Co., Ltd.	Various gauges, air micros, measuring instruments
Kyoritsu Seiki Co., Ltd.	Measuring equipment (tool presetter)
Kumamoto Seken Industry Co., Ltd.	On-machine measuring instrument
Big Daishowa Seiki Co., Ltd.	Measurement / Measurement / Peripheral Equipment
DAIICHI SOKUHAN CO., LTD.	Gauge, air, electric micrometer, measuring instrument, ball screw
Tokyo Seimitsu Co., Ltd.	CMM, various precision measuring instruments, dicing machines, precision cutting blades,
Trio INC.	Dynamic Tool Monitor J-Core (Tool Measurement System)
Mitutoyo Corporation	CMM and various precision measuring instruments
Union Tool Co.	Digital measuring instrument / biological sensor

List of other tool manufacturers

Manufacturers	Products
AFC Japan Corporation	Round bar for carbide tools
N-E Co., Ltd.	Wire cut electrical discharge machine filters and various filters
MST Corporation	Shrink fit holder, replaceable tool arbor, extra fine / angle head
Kyoritsu Seiki Co., Ltd.	Spherical processing machines, measuring equipment (tool presetter), general tools (arbor & holder & special
Gunkyo Seisakusyo Corporation	Filter cleaning, fitting manufacturing, laser nozzle manufacturing
Sakae Seiki Co., Ltd.	Precision vice, wire cutting jig, burner, mold
Smk Co., Ltd.	Wire electrode wire, filter, ion exchange resin, jig for electric discharge machining
Sanwa Chemical Co., Ltd.	Metal processing oil, cleaning fluid, rust preventive oil (Oil mist, oil smoke, hand roughening countermeasure
Showa Tool Co., Ltd.	Tooling, cutting tools, peripheral equipment
SHOWA PRECISION INDUSTRIES CO., Ltd.	Tooling, shrink fit holder, cutting tool, peripheral equipment
TAMURA Corporation	Cutting oil recycling equipment
Daizo Corporation	Lubricants, cleaning agents, pastes / grease / oil products
Big Daishowa Seiki Co., Ltd.	Tooling, cutting tools, measurement / measurement, peripheral equipment
Trio Engineering Co., Ltd.	Warpage removal sheet, ES chuck, ceramic product
Nakajima Doko Co. Ltd.	Cordless gas soldering iron / soldering iron chip
Nakanishi Inc.	High precision motor & spindle micro grinder & tip tool
Nagoya Diamond Kogyo Co., Ltd.	Diamond / CBN wheel, electrodeposition tool, rotor leadless
NIKKEN KOSAKUSHO WORKS, LTD.-	Tooling CNC round table
Nippon Engis Corporation	Diamond slurry, polishing compound, lubricant
Nippon Diamond Co., Ltd.	Various dressers, grinding wheels, finishing wheels, metal bond products, electrodeposition products
Nippon Tokushu Goukin Co., Ltd.	Carbide tool material, throw-away tip, binderless alloy, carbide precision jig
Ehwa Diamond Industrial Co., Ltd.	Diamond wheel / dresser, rotary dresser, PCD & PCBN tool
Hymer Japan	Tooling / Tool Presetter / Measurement / Measurement / Peripheral Equipment
BC TECH CO., LTD	Tooling, cutting tools, peripheral equipment
Fuji Die Co., Ltd.	Cemented carbide wear resistant tool

● Sales of Robot related products

We sell various kinds of collaborative robots and related devices, as well as products that mainly consist of electronic equipment.

• collaborative robot related products

① Sales of 6-axis collaborative robot AUBO made in China (3K • 5K • 7K • 10K portable type)

It has a series of collaborative robot functions, making it an inexpensive and affordable product.



② Sale of Japanese-made 4-axis collaborative SCARA robot "Momoko-chan" (2K portable type)

Since the controller and air valve are all-in-one, the product is compact and excellent for handling.



③ Other collaborative robot-related equipment

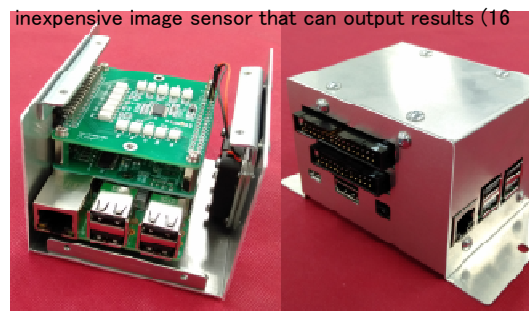
We sell products that are suited for and won't damage the robot hands, such as electric grippers, suction devices, electromagnetic magnets, and flexible chucks.



• Sensor related

Image sensor using WEB camera (an original Sanki product)

Compared with the registration screen, it is an inexpensive image sensor that can output results (16



■ Our Business

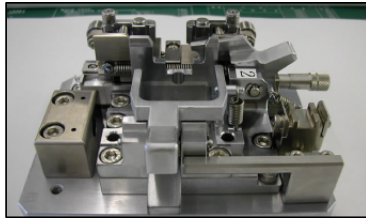
Factory Automation Equipment Sales (specialized)

We provide the best solution to our customers' needs and assure the products' quality through our in-house inspection.

We provide comprehensive design and manufacturing services according to our motto "We provide the best solutions to our customers' needs".

As businesses continue to diversify, we coordinate the needs of our customers with a system that provides quality assurance with our in-house inspection equipment, global sourcing from the U.S, the EU, South Korea, China and Indonesia as well as our ability to make cost-conscious proposals.

Products Overview



Jigs, molds, specialized machine parts	Units / Assy parts	Prototypes / Sample products
Aircraft related parts	Pallets	Stereolithography
Jig tool parts	Conveyors	3D printer
Mold parts	Feeders	Product samples
Specialized machine parts	Probe holder	Mock-up
Globally sourced parts	Harness production	

In-house inspection equipment

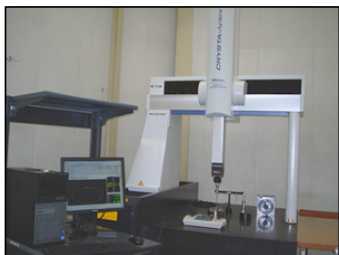
We promise thorough quality assurance.

Our machine inspection technician and a winner of the skills competition, is in charge of in-house inspection.

In-house inspection equipment

In the following we introduce the equipment used for inspection. Besides performing detailed inspection with a microscope, careful checks are carried out by using various inspection equipment.

Products that have passed the strict quality inspection are shipped quickly.



CMM (Coordinate Measuring Machine)

CRYSTA-Apex S776

CAT1000S (Freeform surface evaluation program)

Measurement range
X-axis 700mm
Y-axis 700mm
Z-axis 600mm

CNC machine programmed automatic measurement. Measurement of jigs, specialized machine parts, pallet, model components, high precision parts, etc. Points, lines, circles, surfaces etc., can be measured to determine 3D coordinates. Geometrical tolerance of flatness, position, circularity and so on can be determined.



Measurement microscope

MF-1720H

Measurement range
X-axis 200mm
Y-axis 170mm

Automatic detection of measurement point edge by the image measurement unit.

Minute dimensions like intersections, circle, semicircle, angle, pitch of various model components and precision parts can be measured.



Surface roughness / Contour measuring equipment

SURFCOM 1800D

Stroke
X-axis stroke 100mm
Z-axis stroke 50mm

Contour and roughness can be measured and analyzed by a single unit. Through contact profilometry fine shapes are measured and analyzed. Minute dimensions like circle, semicircle, angle, pitch of various model components and precision parts can be measured.

Product shipment process for quick delivery

By calibrating the measurement equipment used (internal and outsourced), measurement errors are reduced.

We assure quality by visual inspection, quantity checking, and by using precision measurement equipment.

Our inspectors continue to improve their skills and knowledge of measurement by acquiring certified qualifications for machine inspection technicians.

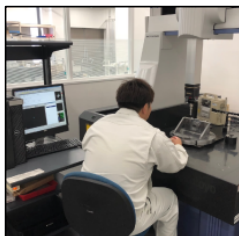
•STEP1 Arrival Check



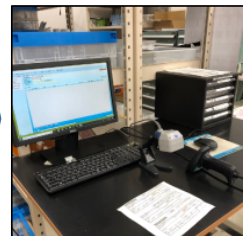
•STEP2 External inspection
General inspection



•STEP3 Precision measurement



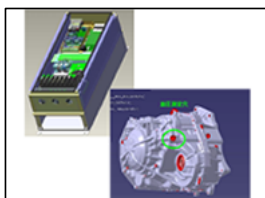
•STEP4 Shipping



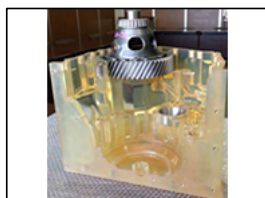
Prototype development support

Total support from prototype model production to PCB production, software development and operation verification.

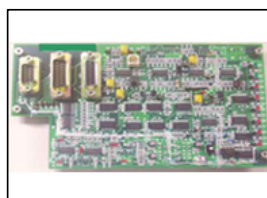
•STEP1 3D data processing



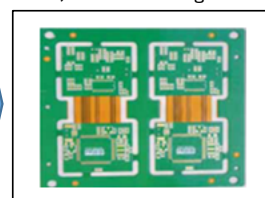
•STEP2 Prototype model production



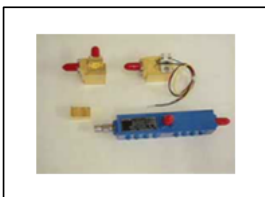
•STEP3 Circuit and "printed circuit board"



•STEP4 Prototype PCB (printed circuit board) manufacturing



•STEP5 Prototype production



•STEP6 Software Development



•STEP7 Actual equipment confirmation



•STEP8 Operation verification



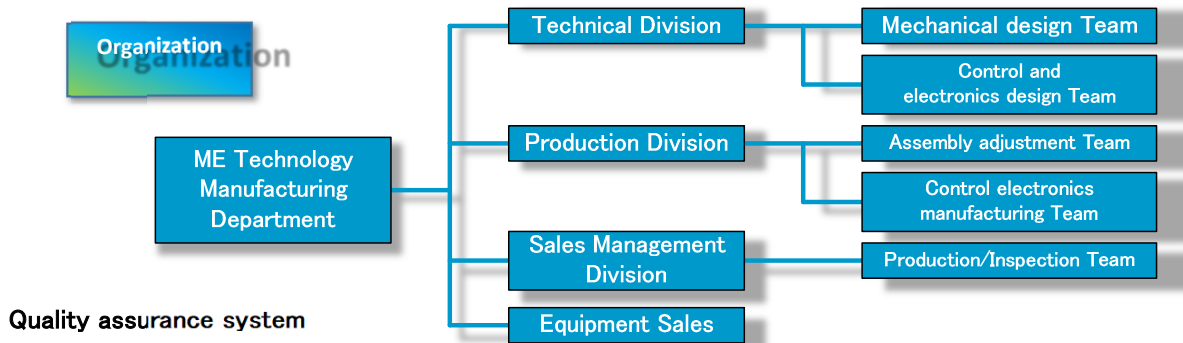
■ Our Business

Manufacturing

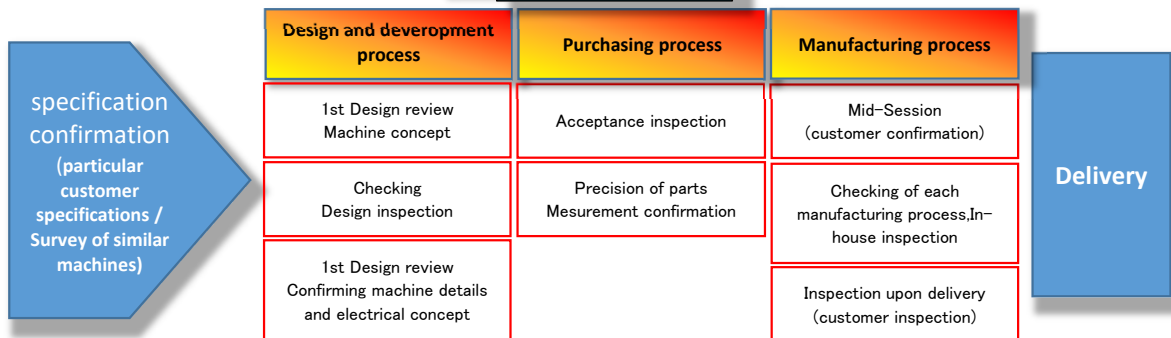
Production equipment planning that matches our customers' needs through machine, control and electronic coordination

We design, manufacture, modify, and relocate custom-made production equipment that meets customer requirements.

Our specialties are assembly inspection equipment and constructing systems which include production data management and special machinery.



Quality assurance system



Quality assurance

The following procedures have been incorporated into the manufacturing process to ensure that customer requirements are met.

Design process: 1st DR(Design review) Completion of mechanical design

2nd DR(Design review) Completion of the detailed design of the machine and of the electrical concept design

Manufacturing process: Checking of each manufacturing process Confirmation at each step of the production process

Checking of office organization Confirmation of each process and final performance

In-house inspection Function and performance inspection upon completion

customer confirmation: Mid-session Confirmation by customer before assembly and wiring

Customer inspection Customer confirmation before delivery

Three axes of manufacturing

•Dedicated machines

We will design and manufacture dedicated machines that comply with customer equipment standards and realize individual equipment functions.

Through many years of experience with dedicated machines, we will realize the functions and performances that customers require.

We will design and manufacture the best production equipment by confirming the requirements and making proposals by meeting the specifications.

•Electronic equipment

We design and manufacture custom electronic devices using personal computers and microcomputers.

We will clarify the requirements by discussing specifications with customers and design electronic circuit hardware and microcomputer / PC software.

We will provide the best equipment for your requirements, including printed circuit board production, housing design and production.

•Factory service

We provide total support for facilities related to the factory from IoT conversion in the factory to relocation, modification and maintenance work of the facility.

In-factory IoT is available not only for new equipment but also for installation to existing equipment, startup work, and operation support.

In addition, we will provide total support for relocation work including preliminary surveys, dismantling work, unloading and loading, installation work, as well as equipment startup and logistics improvements.

Certifications

National certifications

First Class Technical Skill Test passed 4

Second Class Technical Skill Test passed 4

Grade 2 Electronic equipment assembling 3

Private certifications

LabVIEW Developers certification successful candidates

Robot intermediate level certification acquired

Robot beginner certification acquired